



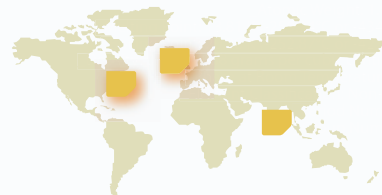
NITROGEN GENERATOR NG250 - 1000

- ▼ NG250-1000_
- // 250- 1000cc/min_max_flow_rate
- // 5.5bar_80psi_outlet_pressure

With more than 10 years experience in development and production of laboratory gas generators Peak Scientific has developed close relationships with Instrument Manufacturers and other clients. We have invested time & effort to learn more about your work, the environment you work in and the instruments you operate to conduct your research. The results are not only products which fulfill your needs and wishes, but they have also been tried, tested & approved by the world's leading Instrument Manufacturers, making it the industry's choice.



We are confident that our products will help you concentrate on more important aspects of your work than your gas supply.



Features & Benefits

- Experience**
 - _more than 10 years of experience in the industry
- Simple Installation**
 - _Generator designed as plug & play system
- Economical**
 - _more cost effective than combustible gas bottles/ cylinders
- Convenient**
 - _24/7 uptime, if required
 - _Can be placed anywhere
 - _No health hazards
 - _No need to worry

The NG250 - 1000_

This range of high purity nitrogen generators produce flow rates of between 250cc/min & 1l/min. A highly efficient Carbon Molecular Sieve (CMS) is used to extract oxygen, moisture, hydrocarbons & other trace gases to produce a continuous supply of high purity nitrogen. Installation of the generator is simple & given the straightforward operation of the instruments maintenance minimal.



Technical Specifications Nitrogen Gas_

	NG250	NG600	NG1000
Max Flow Rate (cc/min ATP)	250	600	1000
Max Outlet Pressure (psi/bar)	80 / 5.5	80 / 5.5	80 / 5.5
Pressure Dewpoint	- 70C / - 94F	- 70C / - 94F	- 70C / - 94F
Outlet Port	1/4" bsp f.	1/4" bsp f.	1/4" bsp f.
Electrical Requirements	110v/60Hz/1.2A 230v/50Hz/0.5A	110v/60Hz/1.2A 230v/50Hz/0.5A	110v/60Hz/1.2A 230v/50Hz/0.5A
Dimensions (cm/ in)	62x43x41 24x17x16	62x43x41 24x17x16	62x43x41 24x17x16
Weight (kg/ lbs)	34 / 75	34 / 75	34 / 75

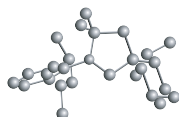


//The safer solution to your total gas requirements_

<http://www.peakscientific.com>
info@peakscientific.com



Rev. 1 22/03/2007



Copyright 2007 Peak Scientific

UK_Headoffice
Peak Scientific Instruments
Fountain Crescent
Inchinnan Business Park
Inchinnan, Renfrewshire
PA4 9RE
Scotland, UK
Tel.: +44 (0)141 812 8100
Fax: +44 (0)141 812 8200

US_Office
Peak Scientific Inc
19 Sterling Road, Suite #5
PO. Box 379
Billerica, MA
01862
USA
Tel.: +1 866 647 1649
Fax: +1 866 732 5427